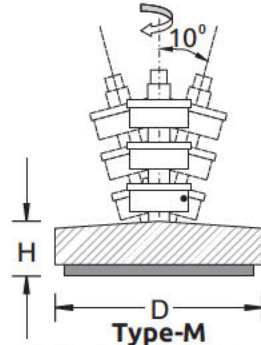
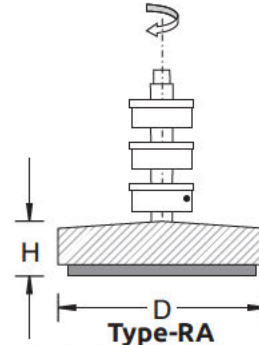


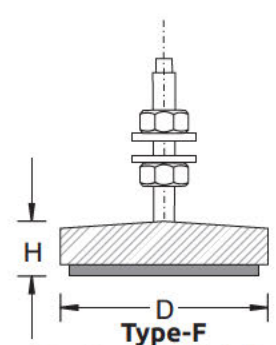
## SCREW SUPPORT MOUNTS, Series DLM/DLMS



One nut Fixed with bolt & two nuts free



One nut Fixed with bolt & two nuts free

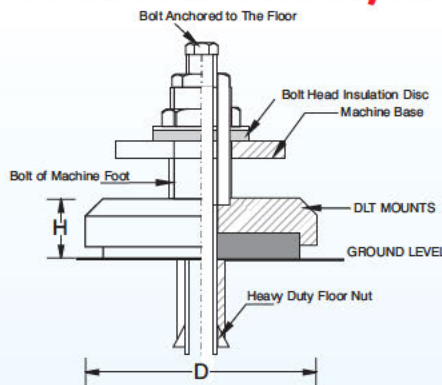


Two Free nuts & bolt fixed

**Dynemech DLM/DLMS Series Mounts**, developed in steel and stainless steel respectively are simple and effective vibration dampers for machines with respective holes in the base. These mounts offer low frequency attenuation, stable machine levelling and vibration reduction. The flexible levelling screw accommodates uneven/sloped surfaces upto 5 degree. DLMS series find application where corrosion resistant materials for hygienic, climatic and environmental reasons are required like in pharmaceutical, food and beverages processing and packaging units, medical equipment manufacturing and chemical processing industries.

Model	Load Kg/pc	Model	Load Kg/pc	Model	Load Kg/pc	Model	Load Kg/pc	Dia (D) mm	H u	H a2	H p2	H s2	Bolt Size
DLM1-u	150	DLM1-a2	190	DLM1-p2	100	DLM1-s2	125	59	21	14	26	31	M16 x 100mm
DLM2-u	350	DLM2-a2	450	DLM2-p2	200	DLM2-s2	300	85	24	17	29	34	M16 x 100mm
DLM3-u	600	DLM3-a2	800	DLM3-p2	400	DLM3-s2	550	110	28	21	33	38	M16 x 150mm
DLM4-u	900	DLM4-a2	1150	DLM4-p2	600	DLM4-s2	850	135	30	23	35	40	M16 x 150mm
DLM5-u	1400	DLM5-a2	1750	DLM5-p2	700	DLM5-s2	1250	165	30	23	35	40	M16 x 150mm
DLM6-u	1900	DLM6-a2	2400	DLM6-p2	1200	DLM6-s2	1700	185	34	27	35	40	M16 x 150mm
DLM7-u	2500	DLM7-a2	3200	DLM7-p2	1500	DLM7-s2	2200	215	35	28	40	45	M16 x 150mm
DLM8-u	3500	DLM8-a2	3975	DLM8-p2	2000	DLM8-s2	2800	249	44	37	49	54	M20 x 150mm
DLM9-u	4200	DLM9-a2	4900	DLM9-p2	2500	DLM9-s2	3500	276	43	36	48	53	M20 x 150mm

## SCREW SUPPORT MOUNTS, Series DLT



DLT Series mounts are used in the machines which must be anchored to the floor along with levelling and vibration reduction. Bolts with thru holes are provided in the machine foot and anchor bolt passes from the machine foot, mount and anchored in the floor nut. An insulating disc is provided between the nut and the machine foot to prevent vibration from transmitting in the floor via the bolt. The dimple and the thru hole in the mount are provided as per the bolt specifications of the machine.

Model	Load Kg/pc	Model	Load Kg/pc	Model	Load Kg/pc	Model	Load Kg/pc	Model	Load Kg/pc	Dia (D) mm	H u/m	H p2/s1	H s2
DLT1-u	150	DLT1-m	190	DLT1-p2	100	DLT1-s2	125	DLT1-s1	80	59	21	26	31
DLT2-u	350	DLT2-m	450	DLT2-p2	200	DLT2-s2	300	DLT2-s1	200	85	24	29	34
DLT3-u	600	DLT3-m	800	DLT3-p2	400	DLT3-s2	550	DLT3-s1	375	110	28	33	38
DLT4-u	900	DLT4-m	1150	DLT4-p2	600	DLT4-s2	850	DLT4-s1	575	135	30	35	40
DLT5-u	1400	DLT5-m	1750	DLT5-p2	700	DLT5-s2	1250	DLT5-s1	800	165	30	35	40
DLT6-u	1900	DLT6-m	2400	DLT6-p2	1200	DLT6-s2	1700	DLT6-s1	1100	185	30	35	40
DLT7-u	2500	DLT7-m	3200	DLT7-p2	1500	DLT7-s2	2200	DLT7-s1	1500	215	35	40	45
DLT8-u	3500	DLT8-m	4000	DLT8-p2	2000	DLT8-s2	2800	DLT8-s1	1900	249	44	49	54
DLT9-u	4200	DLT9-m	5000	DLT9-p2	2500	DLT9-s2	3500	DLT9-s1	2400	276	43	68	53